

The Winston

Middle Tennessee

Single Family

Contact us today for a free consultation.

Call: 256-733-5389

Text: 256-733-5389

 3 Bedrooms

 2.5 Bathrooms

 1,704 Sq. Ft.

 From: \$241,000

CLASSIC ELEVATION



BRICK ELEVATION



CRAFTSMAN ELEVATION



FARMHOUSE ELEVATION



Imagine falling in love every time you open the door ~ That is how we feel about the Winston Home Plan! The Winston features 3 bedrooms and 2.5 bathrooms and 2 stories full of reasons to make this your very own dream home. The main floor is the perfect space to gather with your loved ones with a large family room open to your dining room and spacious kitchen. The second floor features a sizable master suite with master bath and walk in closet. The sky is the limit with the Winston. For extra storage go ahead and add a 2 car garage or if you love to entertain, a covered patio out back is the perfect spot to show off your grilling skills. The memories you make in this home will last a lifetime.



In a continual effort to improve our product, Red Door Homes reserves the right to change product design, features, materials, floor plans, specifications, prices and terms without prior notice. Square footage stated or implied are approximate. Images may be representative of future home and show what's possible not what's included. Seller is a licensed real estate broker in the State of Alabama. CCB#203709



The Winston

Middle Tennessee

Single Family

Contact us today for a free consultation.

Call: 256-733-5389

Text: 256-733-5389

 3 Bedrooms

 2.5 Bathrooms

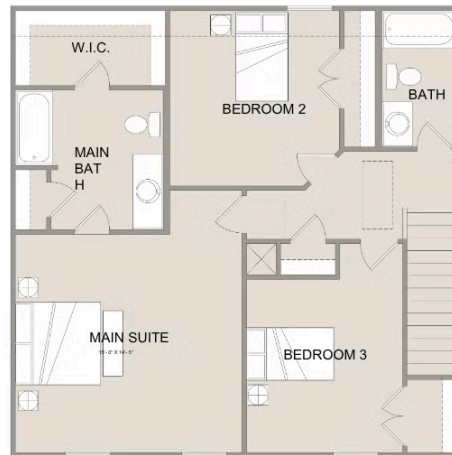
 1,704 Sq. Ft.

 From: \$241,000

Winston
Home Plan
Tour



MAIN



UPPER



In a continual effort to improve our product, Red Door Homes reserves the right to change product design, features, materials, floor plans, specifications, prices and terms without prior notice. Square footage stated or implied are approximate. Images may be representative of future home and show what's possible not what's included. Seller is a licensed real estate broker in the State of Alabama. CCB#203709

