

# The Westover

Middle Tennessee

Single Family

Contact us today for a free consultation.

Call: 256-733-5389

Text: 256-733-5389

 4 Bedrooms  2.5 Bathrooms  2,158 Sq. Ft.  2 Car Garage  From: \$303,000

CLASSIC ELEVATION



BRICK ELEVATION



CRAFTSMAN ELEVATION



FARMHOUSE ELEVATION



The Westover will win you over! This stunning home features 4 bedrooms and 2.5 baths. We love this home so much we made it one of our models and were sure you will love it too. The first floor is all about being together with an open and spacious kitchen, breakfast, and family room. There's even an extra flex room which is perfect for out of town guests, or the private office space you desperately need. The upstairs loft space is perfect for a quiet homework space, or make it a quiet space to curl up with a good book. At the end of the day retire to your private master bedroom complete with master bath and walk-in closet. There's no need to settle because with the Westover, you really can have it all.



*In a continual effort to improve our product, Red Door Homes reserves the right to change product design, features, materials, floor plans, specifications, prices and terms without prior notice. Square footage stated or implied are approximate. Images may be representative of future home and show what's possible not what's included. Seller is a licensed real estate broker in the State of Alabama. CCB#203709*



# The Westover

Middle Tennessee

Single Family

Contact us today for a free consultation.

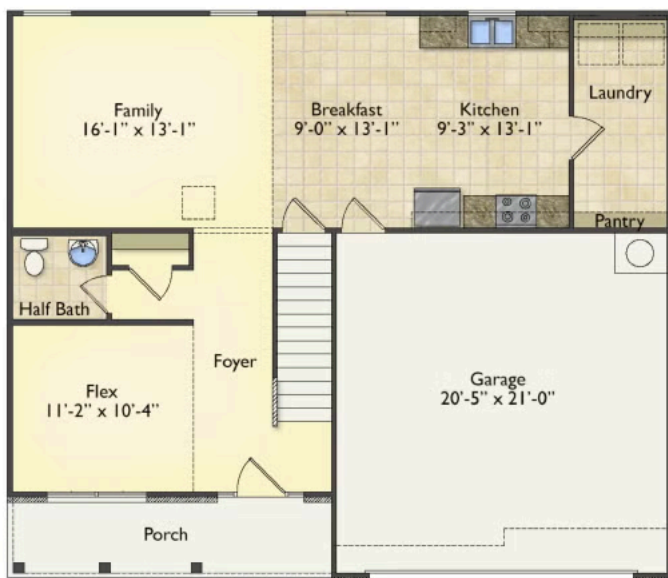
Call: 256-733-5389

Text: 256-733-5389

4 Bedrooms 2.5 Bathrooms 2,158 Sq. Ft. 2 Car Garage From: \$303,000

First Floor

Second Floor



In a continual effort to improve our product, Red Door Homes reserves the right to change product design, features, materials, floor plans, specifications, prices and terms without prior notice. Square footage stated or implied are approximate. Images may be representative of future home and show what's possible not what's included. Seller is a licensed real estate broker in the State of Alabama. CCB#203709

