

The Westmoreland

Middle Tennessee

Single Family

Contact us today for a free consultation.

Call: 256-733-5389

Text: 256-733-5389

 4 Bedrooms  3.5 Bathrooms  2,757 Sq. Ft.  2 Car Garage  From: \$372,000

CLASSIC ELEVATION



BRICK ELEVATION



FARMHOUSE ELEVATION



CRAFTSMAN ELEVATION



Spacious single story living! The Westmoreland features 4 bedrooms, 2.5 baths, and over 2700 sqft in a single story home. This home features all of today's hottest design trends which include a private master retreat with a huge walk in closet, wide open kitchen with large island, spacious laundry room off the garage, and an extra room which can be converted into an office or extra bedroom (or whatever your heart desires). A covered patio outback ensures endless house of entertaining. The huge family room was designed to keep everyone connected and will be your families favorite place to gather for the holiday season. Make your dreams come true by making the Westmoreland your very own home.



In a continual effort to improve our product, Red Door Homes reserves the right to change product design, features, materials, floor plans, specifications, prices and terms without prior notice. Square footage stated or implied are approximate. Images may be representative of future home and show what's possible not what's included. Seller is a licensed real estate broker in the State of Alabama. CCB#203709



The Westmoreland

Middle Tennessee

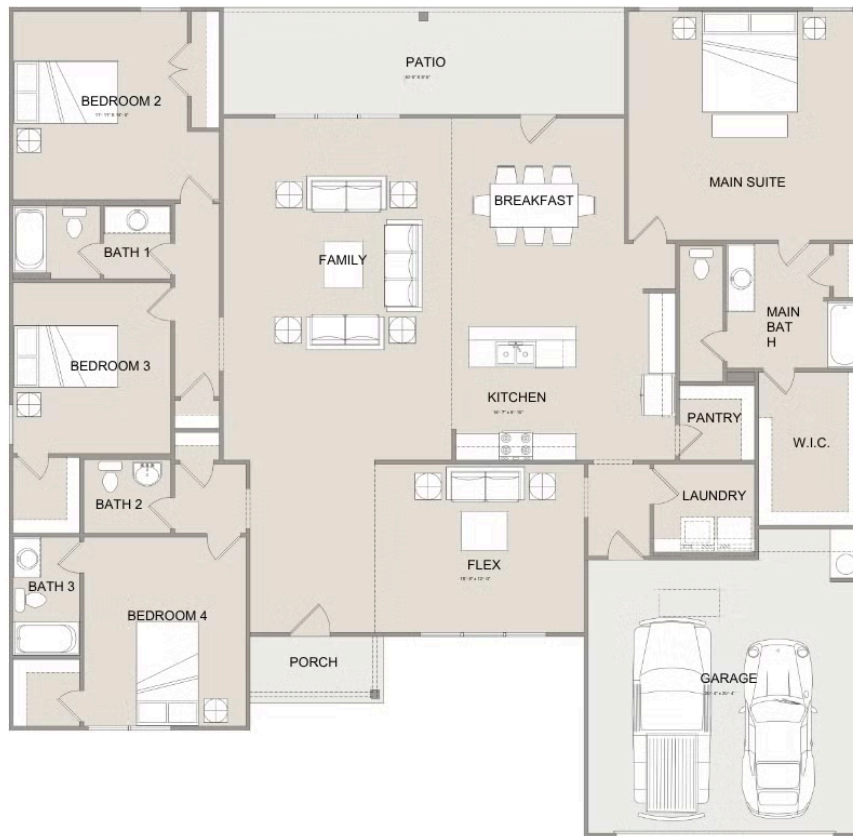
Single Family

Contact us today for a free consultation.

Call: 256-733-5389

Text: 256-733-5389

 4 Bedrooms  3.5 Bathrooms  2,757 Sq. Ft.  2 Car Garage  From: \$372,000



In a continual effort to improve our product, Red Door Homes reserves the right to change product design, features, materials, floor plans, specifications, prices and terms without prior notice. Square footage stated or implied are approximate. Images may be representative of future home and show what's possible not what's included. Seller is a licensed real estate broker in the State of Alabama. CCB#203709

