

# The Spartanburg

Middle Tennessee

Single Family

Contact us today for a free consultation.

Call: 256-733-5389

Text: 256-733-5389

 3 Bedrooms  2.5 Bathrooms  1,608 Sq. Ft.  2 Car Garage  From: \$270,000

CLASSIC ELEVATION



BRICK ELEVATION



CRAFTSMAN ELEVATION



FARMHOUSE ELEVATION



This welcoming and family friendly home is sure to impress. The Spartanburg offers 3 bedrooms and 2.5 baths with endless options to create your dream home. The main floor was designed as the gathering place for the home. A large kitchen open to your dining area and a large family room keeps everyone connected. The large master suite upstairs is the perfect retreat in this second floor split bedroom plan. A loft area is the perfect space to curl up with a good book or a creative space for the art studio you've secretly always wanted. The options are endless and with the Spartanburg, you really can have it all.



*In a continual effort to improve our product, Red Door Homes reserves the right to change product design, features, materials, floor plans, specifications, prices and terms without prior notice. Square footage stated or implied are approximate. Images may be representative of future home and show what's possible not what's included. Seller is a licensed real estate broker in the State of Alabama. CCB#203709*



# The Spartanburg

Middle Tennessee

Single Family

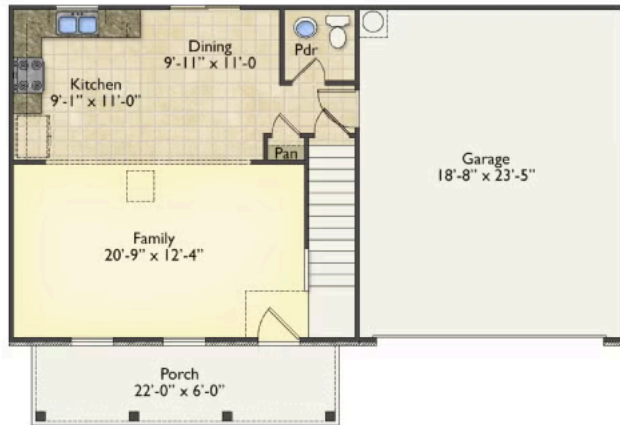
Contact us today for a free consultation.

Call: 256-733-5389

Text: 256-733-5389

 3 Bedrooms  2.5 Bathrooms  1,608 Sq. Ft.  2 Car Garage  From: \$270,000

First Floor



Second Floor



In a continual effort to improve our product, Red Door Homes reserves the right to change product design, features, materials, floor plans, specifications, prices and terms without prior notice. Square footage stated or implied are approximate. Images may be representative of future home and show what's possible not what's included. Seller is a licensed real estate broker in the State of Alabama. CCB#203709

