

The Newport

Middle Tennessee

Single Family

Contact us today for a free consultation.

Call: 256-733-5389

Text: 256-733-5389

 3 Bedrooms

 2 Bathrooms

 1,267 Sq. Ft.

 From: \$217,000

CLASSIC ELEVATION



CLASSIC ELEVATION



BRICK ELEVATION



CRAFTSMAN ELEVATION



The Newport is a 3 bedroom, 2 bath home and has everything on your wish list. This desirable split bedroom plan complete with a master suite and large walk in closet means you finally have a place for peace and quiet to retire at the end of the day. The large great room will be your family's favorite gathering place. This versatile plan offers a kitchen layout option for a large open space just perfect for entertaining. If extra storage is on your mind the ability to add a 2 car garage will check that item right off your list. Dream homes really do come true.



In a continual effort to improve our product, Red Door Homes reserves the right to change product design, features, materials, floor plans, specifications, prices and terms without prior notice. Square footage stated or implied are approximate. Images may be representative of future home and show what's possible not what's included. Seller is a licensed real estate broker in the State of Alabama. CCB#203709



The Newport

Middle Tennessee

Single Family

Contact us today for a free consultation.

Call: 256-733-5389

Text: 256-733-5389

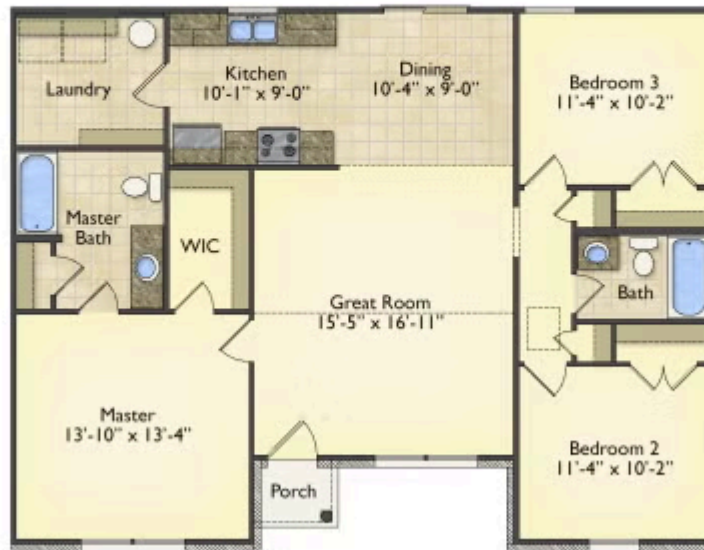
 3 Bedrooms

 2 Bathrooms

 1,267 Sq. Ft.

 From: \$217,000

First Floor



In a continual effort to improve our product, Red Door Homes reserves the right to change product design, features, materials, floor plans, specifications, prices and terms without prior notice. Square footage stated or implied are approximate. Images may be representative of future home and show what's possible not what's included. Seller is a licensed real estate broker in the State of Alabama. CCB#203709

