

# The Brunswick

Middle Tennessee

Single Family

Contact us today for a free consultation.

Call: 256-733-5389

Text: 256-733-5389

 4 Bedrooms  2 Bathrooms  2,525 Sq. Ft.  2 Car Garage  From: \$354,000

CLASSIC ELEVATION



BRICK ELEVATION



CRAFTSMAN ELEVATION



FARMHOUSE ELEVATION



Say hello to your very own dream home. The Brunswick is a stunning 4 bedroom, 2 bath home bursting with possibility. Picture yourself winding down in your spacious master suite and slipping into a bubble bath in your private master bathroom. Looking for an office at home or need an extra room for visiting guests? This versatile split-bedroom plan has an optional 5th room for that and more! Spend your morning enjoying a cup of Joe from your breakfast bar in your large eat in kitchen with an island and later enjoy a quiet evening on your covered patio out back. If you can dream it, we can create it.



*In a continual effort to improve our product, Red Door Homes reserves the right to change product design, features, materials, floor plans, specifications, prices and terms without prior notice. Square footage stated or implied are approximate. Images may be representative of future home and show what's possible not what's included. Seller is a licensed real estate broker in the State of Alabama. CCB#203709*



# The Brunswick

Middle Tennessee

Single Family

Contact us today for a free consultation.

Call: 256-733-5389

Text: 256-733-5389

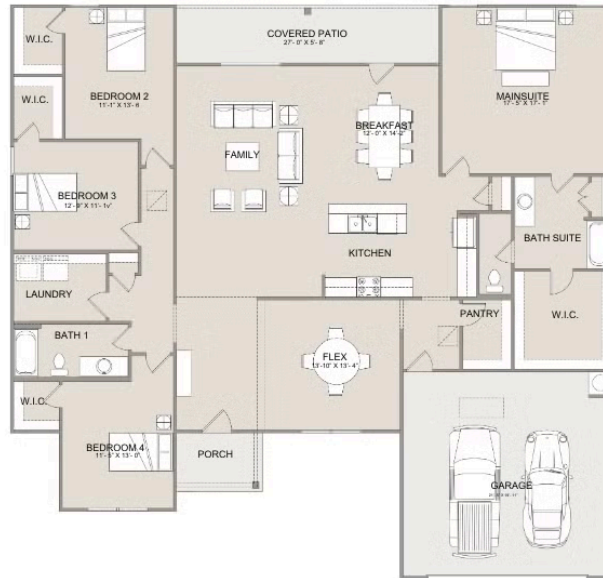
 4 Bedrooms

 2 Bathrooms

 2,525 Sq. Ft.

 2 Car Garage

 From: \$354,000



In a continual effort to improve our product, Red Door Homes reserves the right to change product design, features, materials, floor plans, specifications, prices and terms without prior notice. Square footage stated or implied are approximate. Images may be representative of future home and show what's possible not what's included. Seller is a licensed real estate broker in the State of Alabama. CCB#203709

