

# The Brunswick I

Middle Tennessee

Single Family

Contact us today for a free consultation.

Call: 256-733-5389

Text: 256-733-5389

 4 Bedrooms  2 Bathrooms  2,895 Sq. Ft.  2 Car Garage  From: \$404,000

CLASSIC ELEVATION



BRICK ELEVATION



CRAFTSMAN ELEVATION



FARMHOUSE ELEVATION



Say hello to your dream home—now with even more room to grow! The Brunswick I includes all the features you love in the original floor plan, plus a spacious upstairs bonus room, perfect for a playroom, media room, or home office.



*In a continual effort to improve our product, Red Door Homes reserves the right to change product design, features, materials, floor plans, specifications, prices and terms without prior notice. Square footage stated or implied are approximate. Images may be representative of future home and show what's possible not what's included. Seller is a licensed real estate broker in the State of Alabama. CCB#203709*



# The Brunswick I

Contact us today for a free consultation.

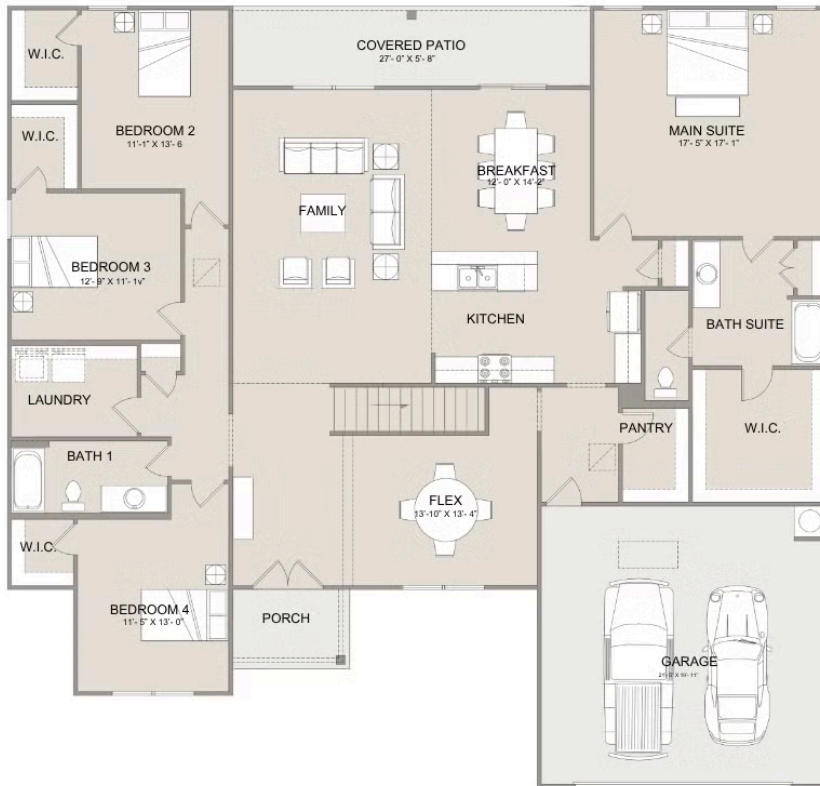
Middle Tennessee

Call: 256-733-5389

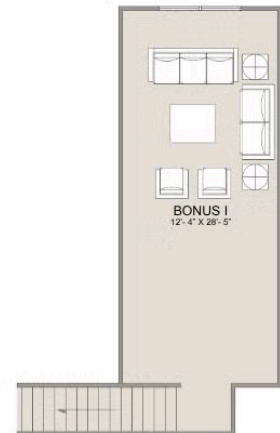
Single Family

Text: 256-733-5389

4 Bedrooms 2 Bathrooms 2,895 Sq. Ft. 2 Car Garage From: \$404,000



MAIN



UPPER



In a continual effort to improve our product, Red Door Homes reserves the right to change product design, features, materials, floor plans, specifications, prices and terms without prior notice. Square footage stated or implied are approximate. Images may be representative of future home and show what's possible not what's included. Seller is a licensed real estate broker in the State of Alabama. CCB#203709

