

# The Norfolk

## South Alabama

### Single Family

Contact us today for a free consultation.

Call: 256-733-5389

Text: 256-733-5389

 3 Bedrooms

 2 Bathrooms

 1,382 Sq. Ft.

 2 Car Garage

 From: \$198,000

CLASSIC ELEVATION



BRICK ELEVATION



CRAFTSMAN ELEVATION



FARMHOUSE ELEVATION



This adorable home is designed for today's lifestyle. The Norfolk is a charming home offering 3 bedrooms and 2 baths. Dust off those cookbooks and prepare to create the families next favorite meal in your dream kitchen with large island. Savor your morning cup of joe on your covered patio out back, and retire to your master bedroom retreat in this split bedroom plan designed for the peace and quiet that until now, you have only dreamed of. These are just a few of the reasons to make this dream home your own.



*In a continual effort to improve our product, Red Door Homes reserves the right to change product design, features, materials, floor plans, specifications, prices and terms without prior notice. Square footage stated or implied are approximate. Images may be representative of future home and show what's possible not what's included. Seller is a licensed real estate broker in the State of Alabama. CCB#203709*



# The Norfolk

South Alabama

Single Family

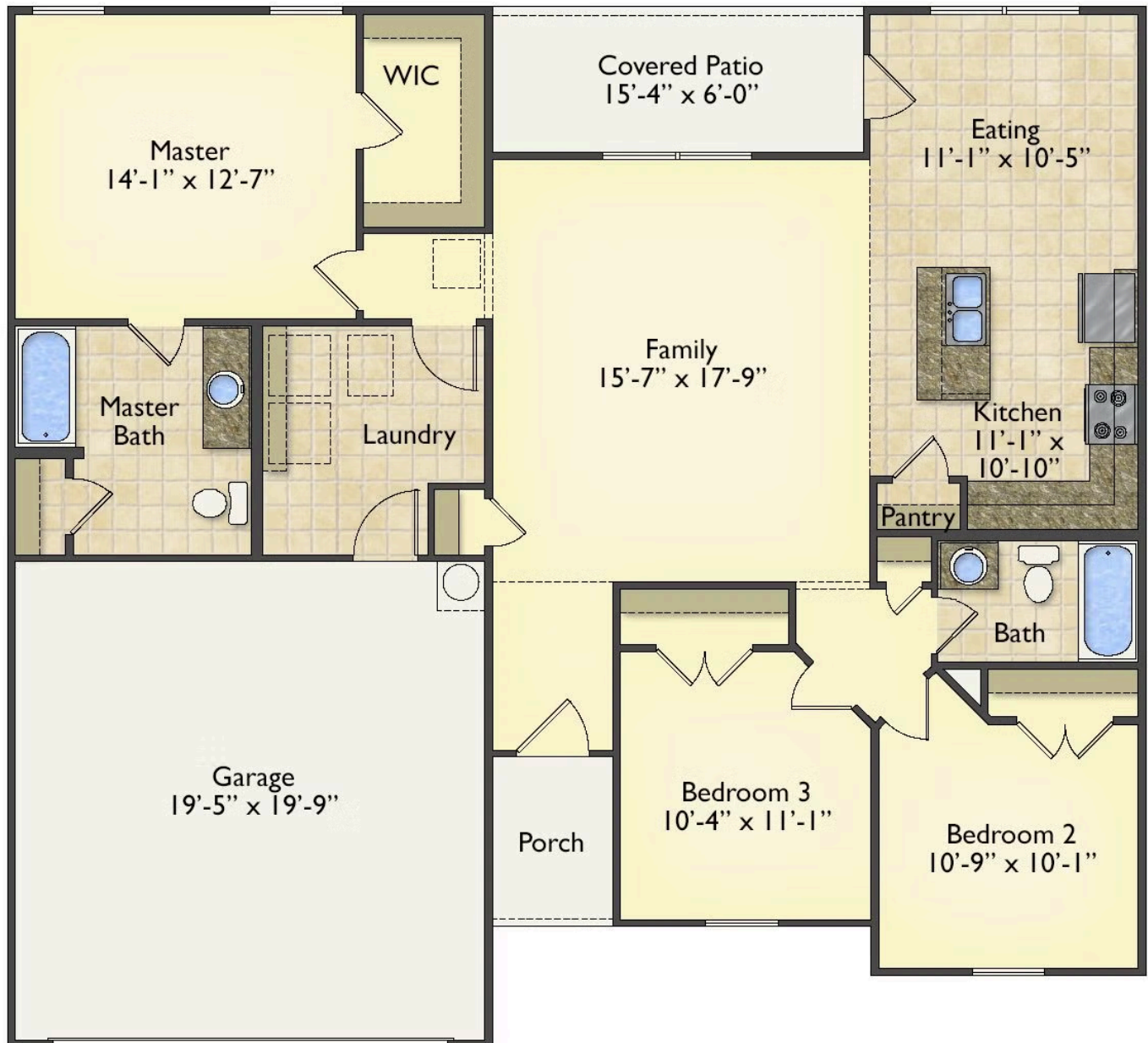
Contact us today for a free consultation.

Call: 256-733-5389

Text: 256-733-5389

 3 Bedrooms  2 Bathrooms  1,382 Sq. Ft.  2 Car Garage  From: \$198,000

## First Floor



In a continual effort to improve our product, Red Door Homes reserves the right to change product design, features, materials, floor plans, specifications, prices and terms without prior notice. Square footage stated or implied are approximate. Images may be representative of future home and show what's possible not what's included. Seller is a licensed real estate broker in the State of Alabama. CCB#203709

