

The Lexington II

South Alabama

Single Family

Contact us today for a free consultation.

Call: 256-733-5389

Text: 256-733-5389

 4 Bedrooms  3 Bathrooms  2,808 Sq. Ft.  2 Car Garage  From: \$323,000

CLASSIC ELEVATION



BRICK ELEVATION



CRAFTSMAN ELEVATION



FARMHOUSE ELEVATION



The Lexington II takes everything you love about the original and gives you even more. Enjoy a spacious second-floor bonus room plus an additional bedroom, bathroom, and a huge storage closet



In a continual effort to improve our product, Red Door Homes reserves the right to change product design, features, materials, floor plans, specifications, prices and terms without prior notice. Square footage stated or implied are approximate. Images may be representative of future home and show what's possible not what's included. Seller is a licensed real estate broker in the State of Alabama. CCB#203709



The Lexington II

South Alabama

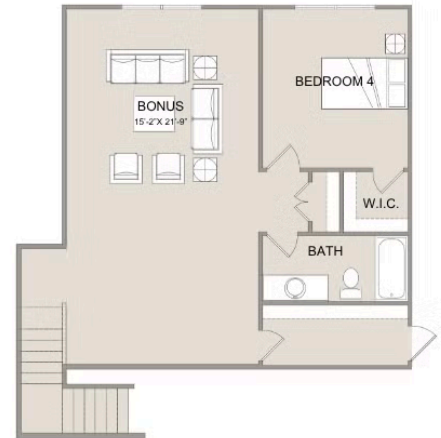
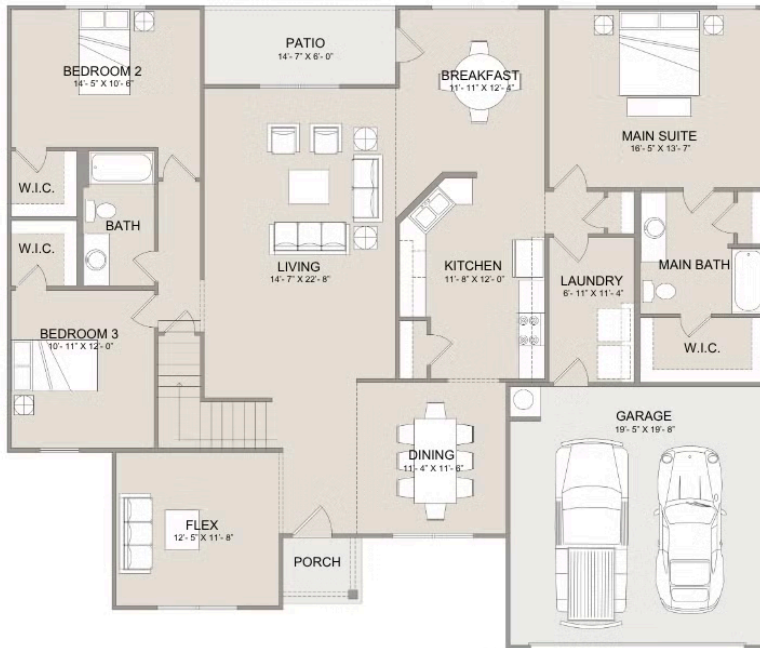
Single Family

Contact us today for a free consultation.

Call: 256-733-5389

Text: 256-733-5389

 4 Bedrooms  3 Bathrooms  2,808 Sq. Ft.  2 Car Garage  From: \$323,000



In a continual effort to improve our product, Red Door Homes reserves the right to change product design, features, materials, floor plans, specifications, prices and terms without prior notice. Square footage stated or implied are approximate. Images may be representative of future home and show what's possible not what's included. Seller is a licensed real estate broker in the State of Alabama. CCB#203709

