

The Lexington I

South Alabama

Single Family

Contact us today for a free consultation.

Call: 256-733-5389

Text: 256-733-5389

 3 Bedrooms  2 Bathrooms  2,493 Sq. Ft.  2 Car Garage  From: \$300,000

CLASSIC ELEVATION



BRICK ELEVATION



CRAFTSMAN ELEVATION



FARMHOUSE ELEVATION



The Lexington I offers open, single-family living at its finest—with flexible options to fit your lifestyle. Now available with a spacious second-floor bonus room!



In a continual effort to improve our product, Red Door Homes reserves the right to change product design, features, materials, floor plans, specifications, prices and terms without prior notice. Square footage stated or implied are approximate. Images may be representative of future home and show what's possible not what's included. Seller is a licensed real estate broker in the State of Alabama. CCB#203709



The Lexington I

South Alabama

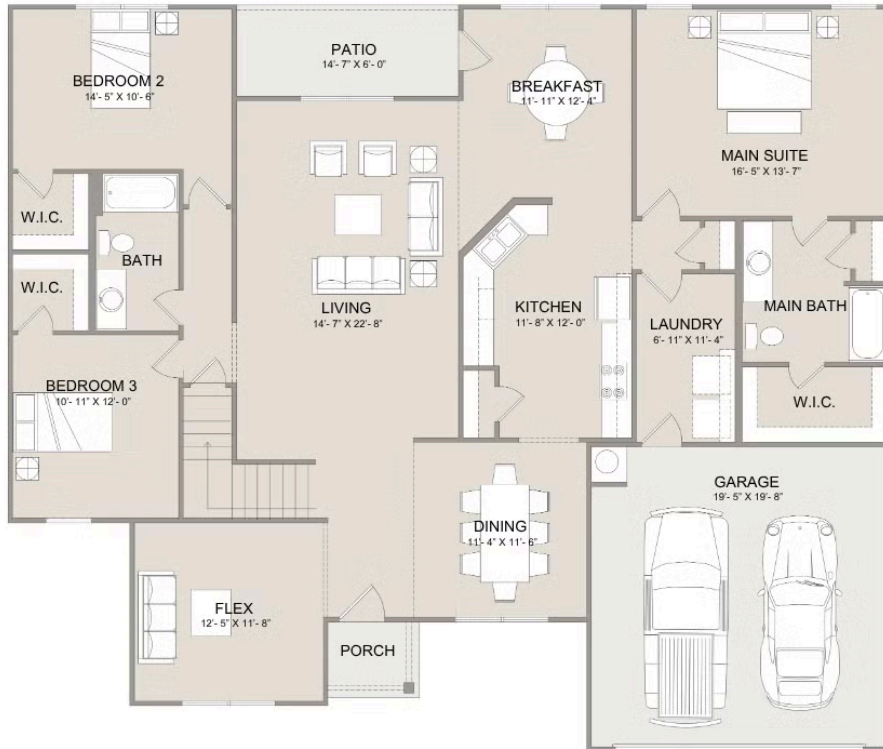
Single Family

Contact us today for a free consultation.

Call: 256-733-5389

Text: 256-733-5389

 3 Bedrooms  2 Bathrooms  2,493 Sq. Ft.  2 Car Garage  From: \$300,000



MAIN



UPPER



In a continual effort to improve our product, Red Door Homes reserves the right to change product design, features, materials, floor plans, specifications, prices and terms without prior notice. Square footage stated or implied are approximate. Images may be representative of future home and show what's possible not what's included. Seller is a licensed real estate broker in the State of Alabama. CCB#203709

