

# The Brunswick II

South Alabama

Single Family

Contact us today for a free consultation.

Call: 256-733-5389

Text: 256-733-5389

 5 Bedrooms  3 Bathrooms  3,334 Sq. Ft.  2 Car Garage  From: \$355,000

CLASSIC ELEVATION



BRICK ELEVATION



CRAFTSMAN ELEVATION



FARMHOUSE ELEVATION



The Brunswick II takes it a step further with everything in the Brunswick I plus a private upstairs bedroom and bathroom, making it ideal for guests, teens, or multigenerational living—without sacrificing style or space.



*In a continual effort to improve our product, Red Door Homes reserves the right to change product design, features, materials, floor plans, specifications, prices and terms without prior notice. Square footage stated or implied are approximate. Images may be representative of future home and show what's possible not what's included. Seller is a licensed real estate broker in the State of Alabama. CCB#203709*



# The Brunswick II

South Alabama

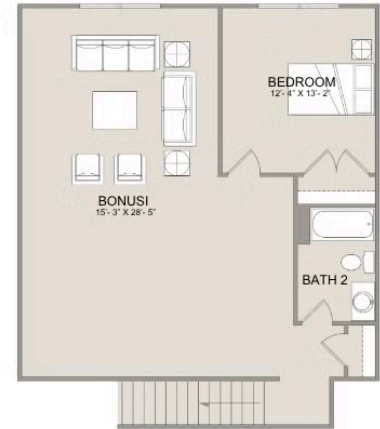
Single Family

Contact us today for a free consultation.

Call: 256-733-5389

Text: 256-733-5389

 5 Bedrooms  3 Bathrooms  3,334 Sq. Ft.  2 Car Garage  From: \$355,000



In a continual effort to improve our product, Red Door Homes reserves the right to change product design, features, materials, floor plans, specifications, prices and terms without prior notice. Square footage stated or implied are approximate. Images may be representative of future home and show what's possible not what's included. Seller is a licensed real estate broker in the State of Alabama. CCB#203709

